

CSIS, Washington DC  
10, 11 July 2014

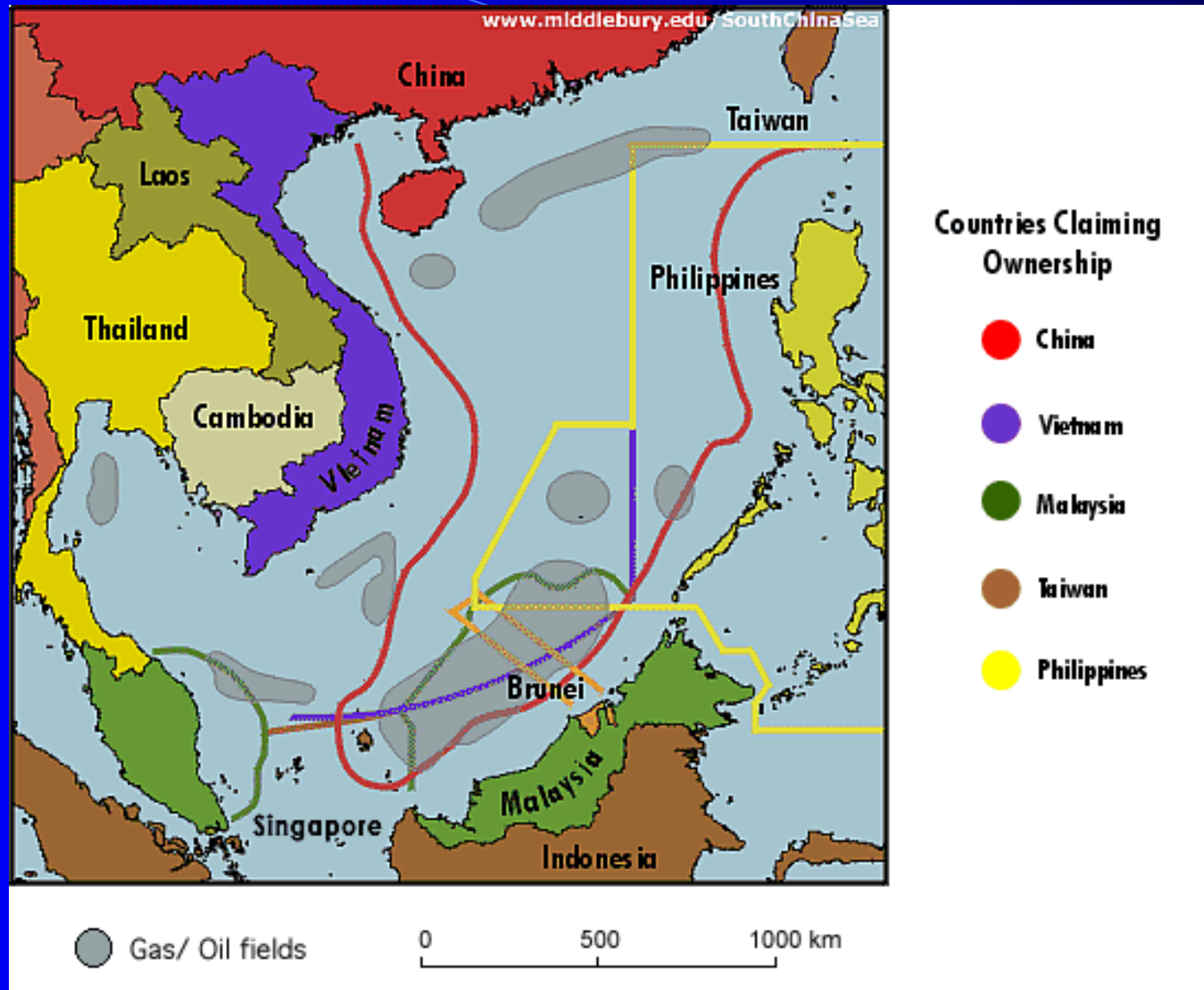
# Recent Trends in the South China Sea and U.S. Policy

## Perspectives on U.S. Policy toward the South China Sea

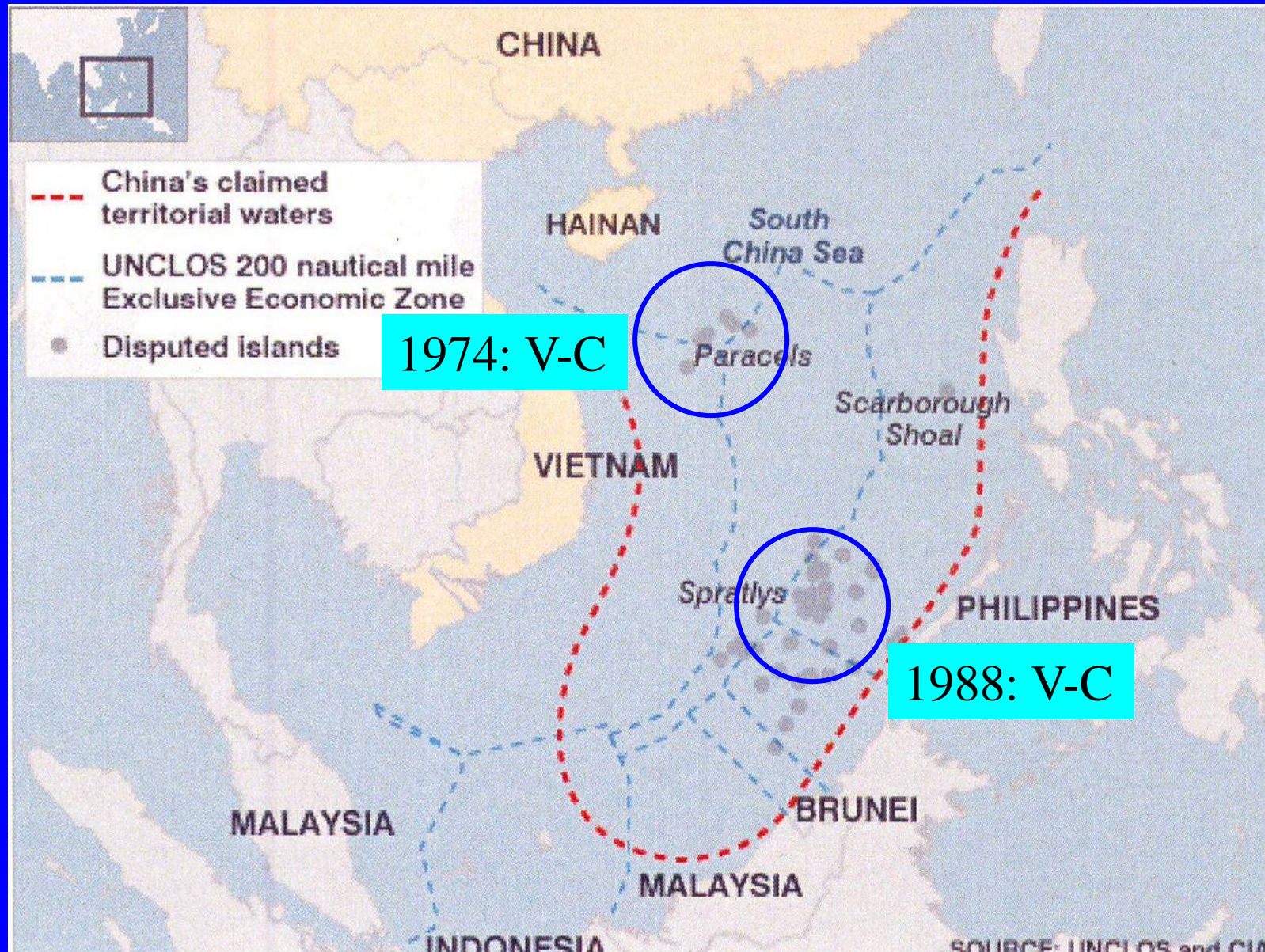
Yoji Koda

Vice Admiral, JMSDF (Retired)  
Former Commander in Chief, JMSDF Fleet

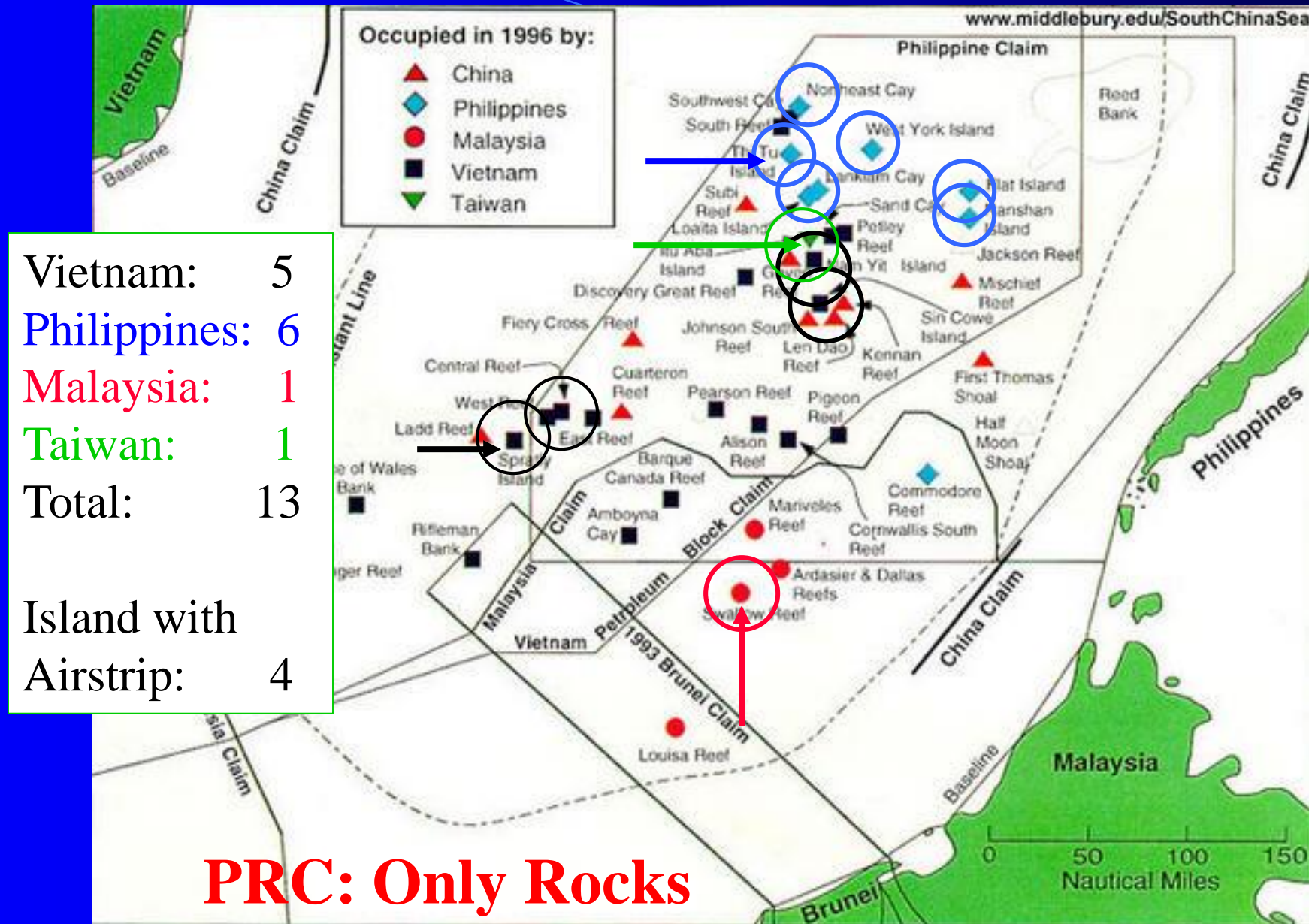
# South China Sea



# History: Two Major Sea Combats



# Hot Spots: Spratly Islands



# Spratly Islands (Ownership & Owner )

Island's Name	Area (SQ km)	Practical Control	Claimants	Air Facility
Itu Aba Is.	0.43	Taiwan	V, P, PRC	R/W:1,150m
Thitu Is.	0.37	The Philippines	V, T, PRC	R/W:1,800m
West York Is.	0.18	The Philippines	V, T, PRC	
Spratly Is.	0.13	Vietnam	T, PRC	R/W: 500m
Northwest Cay	0.13	The Philippines	V, T, PRC	
Southwest Cay	0.12	Vietnam	V, T, PRC	
Sin Cowe Is	0.08	Vietnam	V, T, PRC	
Loaita Is.	0.07	Vietnam	V, T, PRC	
Nanshan Is.	0.08	The Philippines	V, T, PRC	
Swallow Reef	0.06	Malaysia	T, PRC	R/W:1,300m
Mamyit Is.	0.05	Vietnam	V, T, PRC	
Flat Is.	0.04	The Philippines	V, T, PRC	
Central Reef	-	Vietnam	V, T, PRC	

# 4 Aces in the Spratly Islands - 1



**Thitu Is. (P) : 1800m/6,000ft**

**Spratly Is. (V) : 500m/1,700ft**



# 4 Aces in the Spratly Islands - 2

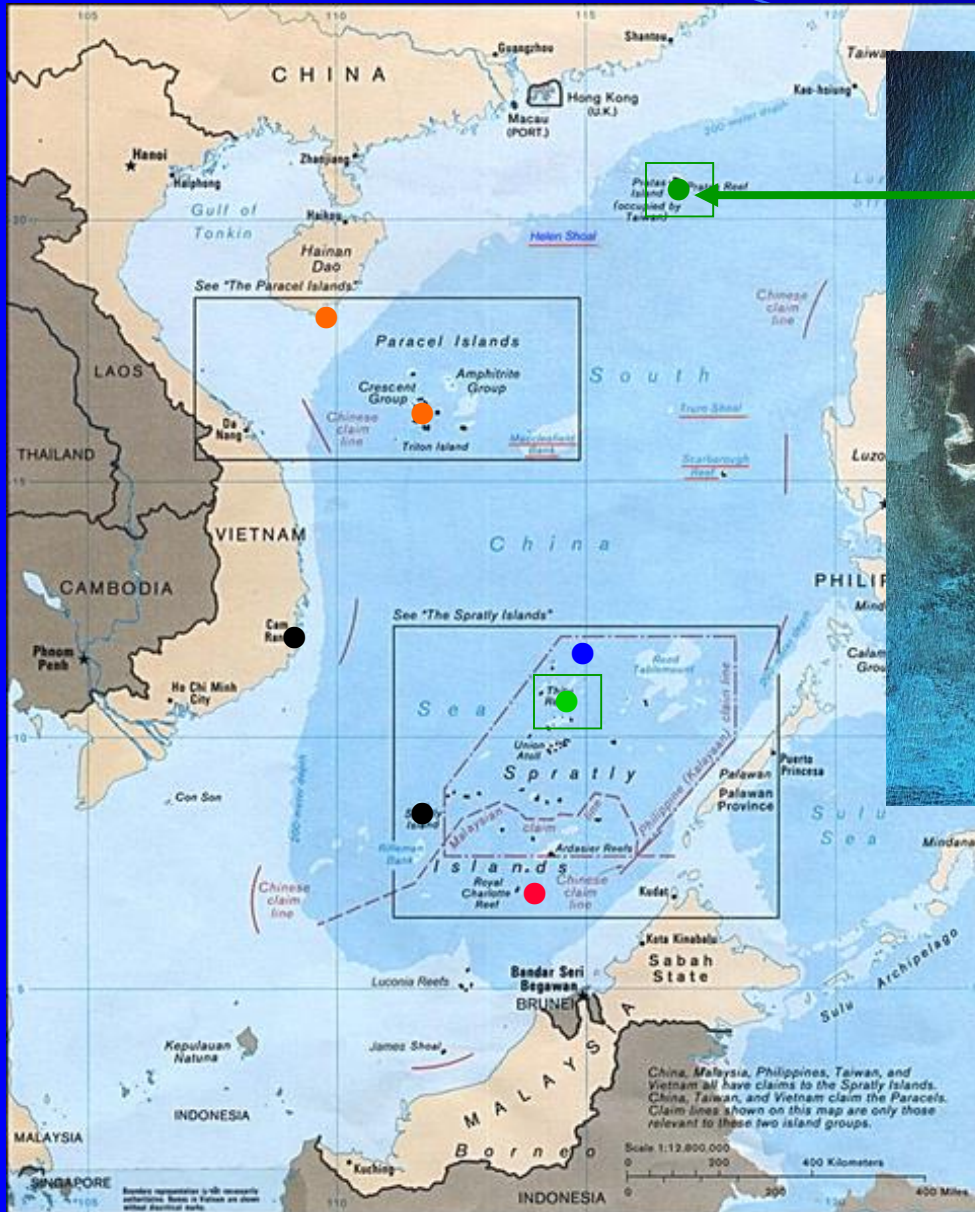


**Itu Aba Is. (T) : 1,150m/4,000ft**



**Swallow Reef (M): 1,300m/4,300ft**

# Platas Islands



**Pratas Is. (T): 1,500m 5,000ft**

# Recent Events

## PLA's Assertive and Unilateral Adventurism

- PPC's Oil Drilling Attempt in Paracel Islands  
Vietnam and PRC
- Second Thomas Shoal : Blockade of Supply Ship  
Philippines and PRC
- James Shoal : Provocation by the Force  
Malaysia and PRC
- Johnson South Reef : Land Filling of the Reef  
Vietnam/Philippines and PRC
- Scarborough Shoal : Seizure of the Shoal  
Philippines and PRC

# Real Issues: Reclamation!

China's Strategic Goal:

Monopolistic Control of South China Sea (SCS)

- Northern SCS : Practical Control

Woody Island

Strong Appetite for Reclamation

- Southern SCS : Spratly Islands

No Foot Print ➡ Johnson South Reef

- Eastern SCS : No Foot Print

No Foot Print ➡ Scarborough Shoal

# Woody Island (PRC)

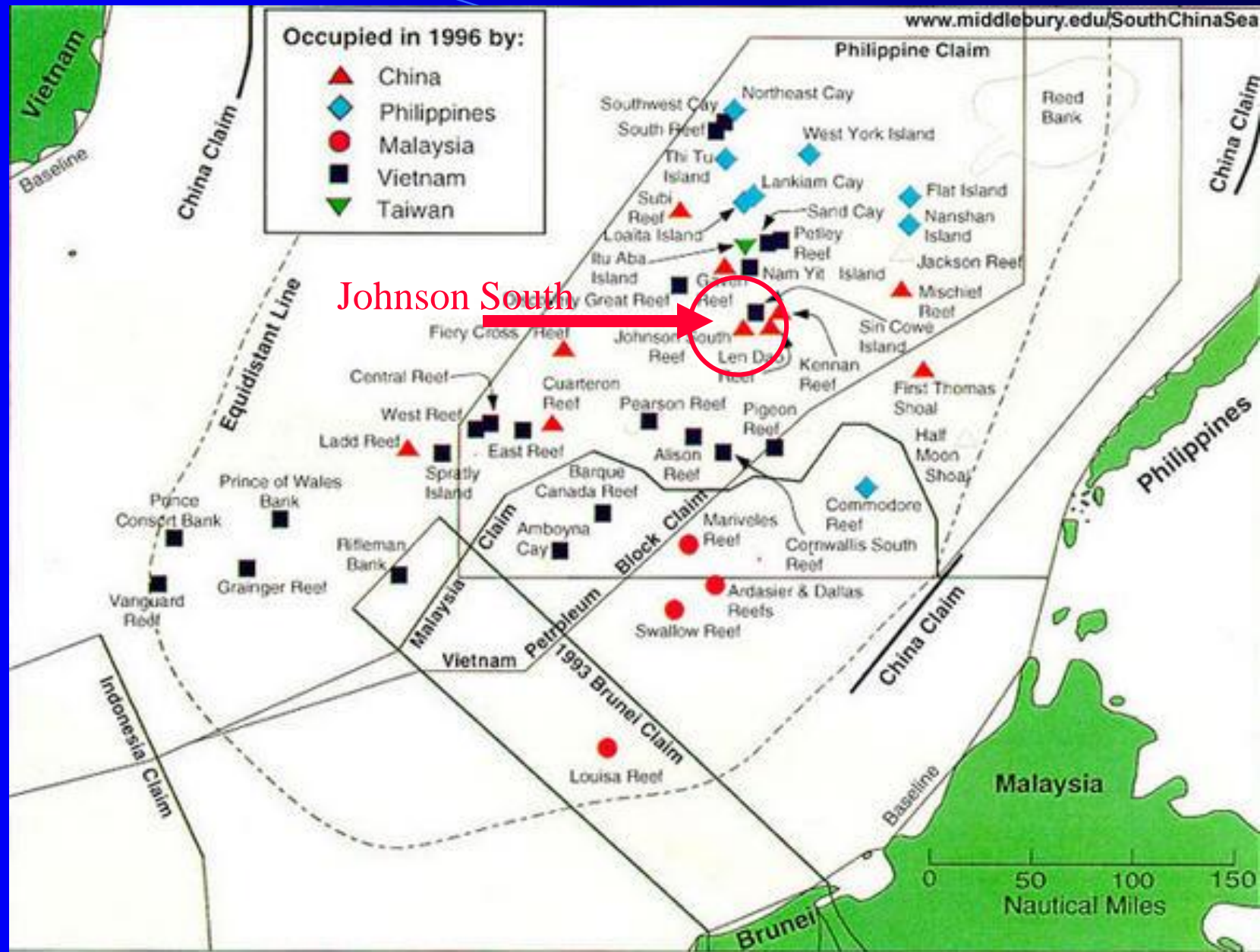
Potential ASW Airbase in South China Sea



RW: 2,400m/8,000ft with Parallel Taxi Way

Sufficient land space for military facilities/installations

# Johnson South Reef - 1



# Johnson South Reef - 2



# Johnson South Reef - 3



Serious Environmental Destruction



Original

2012. 3

2013. 2

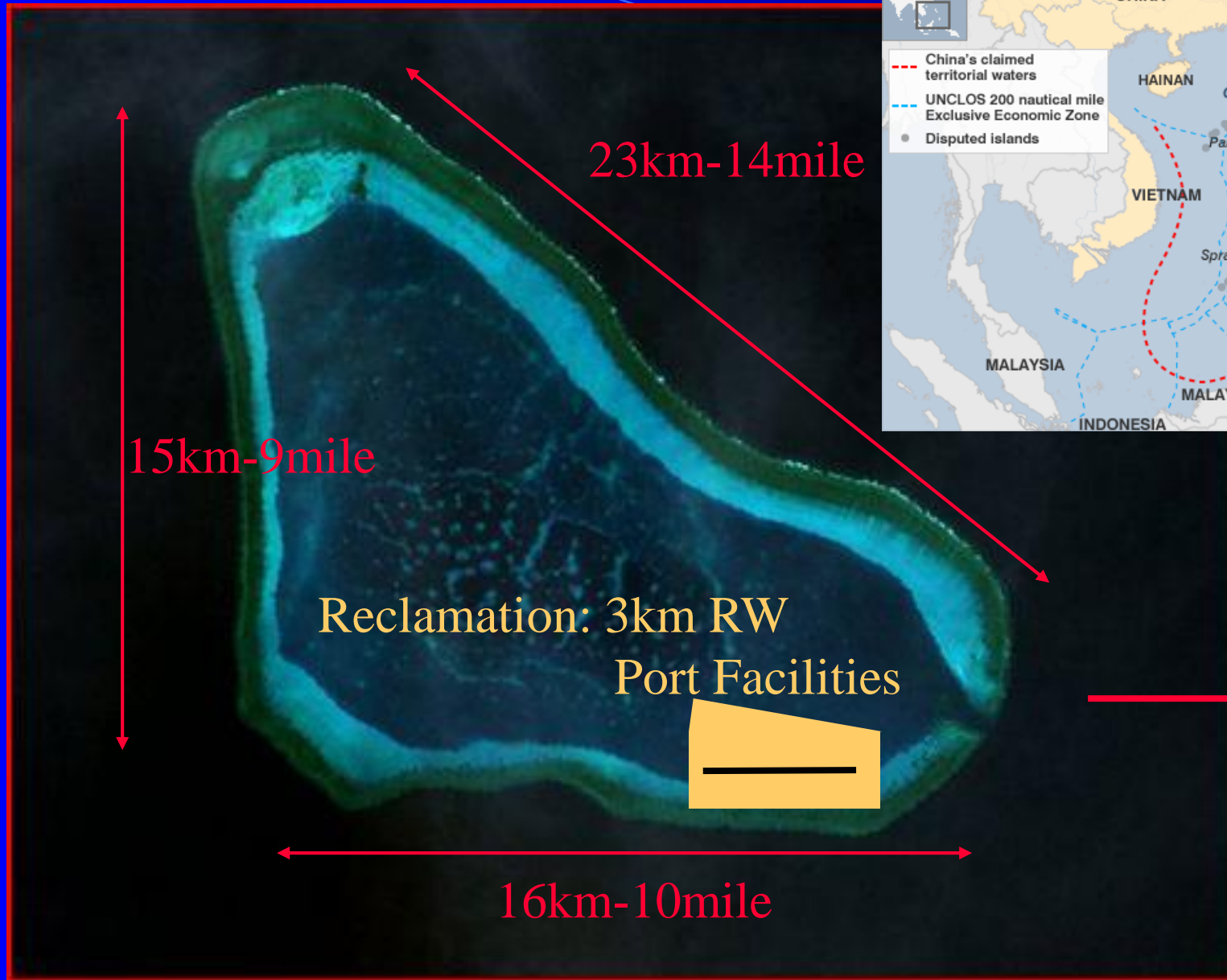
2014. 2

# Johnson South Reef – 4

Conceptual Picture of the Future Reef  
2,500m Class RW+Taxi Way  
Port Facilities for Deep Draft Ships



# Scarborough Shoal-1



# Scarborough Shoal-2

## Wide Area for Reclamation

Large Air Field

2,500m-3,000m RW

TAC-Air, Large Transport, MPA

Large Port for Deep Draft Ships

Depth of Water: 10~20m

Ideal Naval and Air Base in the Eastern SCS

Sufficient Logistic Support Capability

Game-changer of SCS Power Balance

# South China Sea

## Strategic Spots for Sea Control



# Future Course of Actions (USA+Japan)

## Reclamation: Game-changer in SCS Power Game

If Realized: Extremely Favorable Situation to China

Unfavorable Situation to USA and Japan

### Issues

- Unilateral action at Disputed Islands
- UNCLOS: Semi-Submerges Rocks?
- Double Standard: Japans Case
- Destruction of Great Nature: Coral Reef Destruction
- Island: Easy to take but Difficult to Defend (IJP)
- Offensive Capability (U.S. Forces)

Thank you for your patience!



Ready Force for Peace

