



Making Logistics a National Priority for Panama

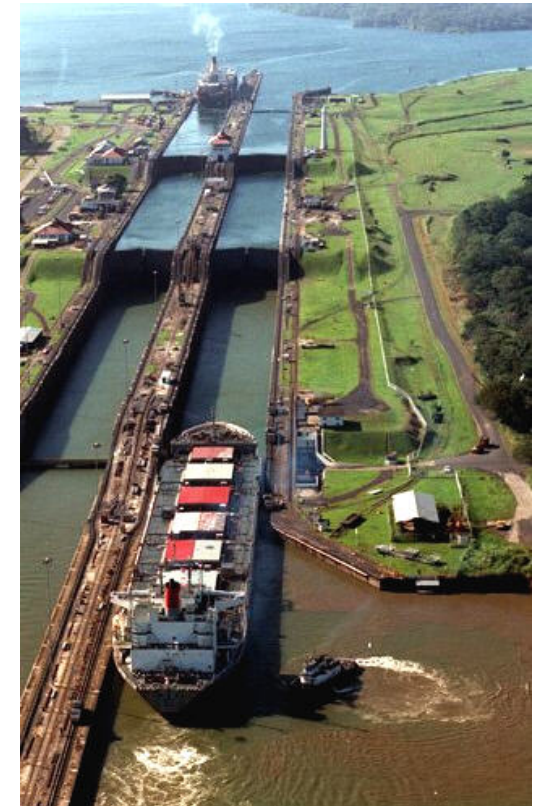
Lessons Learned

CSIS Panel
August 28, 2012

Don Ratliff
don.ratliff@gatech.edu
Executive Director
Georgia Tech Supply Chain & Logistics Institute

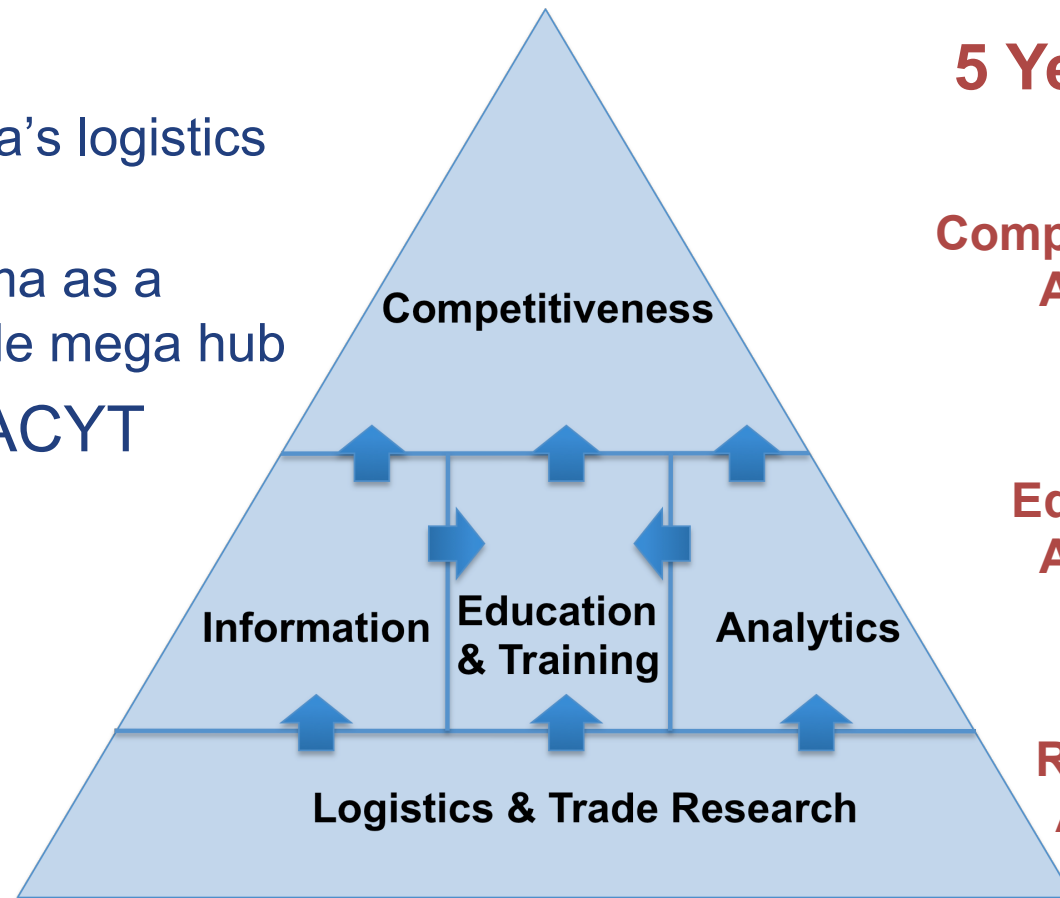
Panama's “Logistics” Image

- Panama Canal
 - Expansion in 2015
- Logistics is one of 4 economic pillars
 - Finance
 - Tourism
 - Agriculture
 - Logistics
- Desire to be a logistics and trade hub for the Americas
- World Bank's LPI
 - 2010 Panama 51st
 - 2012 Panama 61st



Georgia Tech Panama Logistics Innovation & Research Center

- Goals
 - Improve Panama's logistics performance
 - Establish Panama as a logistics and trade mega hub
- Sponsor – SENACYT



5 Year Plan

**Competitiveness
Agenda**

**Education
Agenda**

**Research
Agenda**

Role of GT Panama Logistics Innovation & Research Center

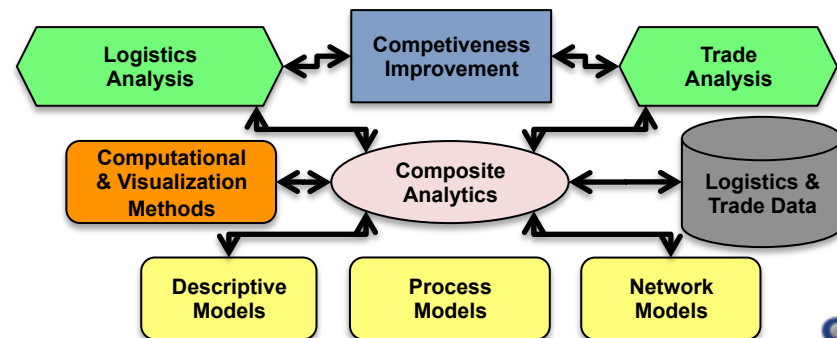
- Provide the repository for logistics and trade data
- Facilitate the activities of the Logistics Cabinet
 - Provide an objective view of Panama's logistics capabilities and constraints
 - Provide analytics to support Logistics Cabinet decision making
- Facilitate logistics investment and business development in Panama
 - Provide an objective view of Panama's logistics capabilities and constraints
 - Provide analytics to support Panama logistics stakeholders' decision making

Research Agenda

<http://logistics.gatech.pa>

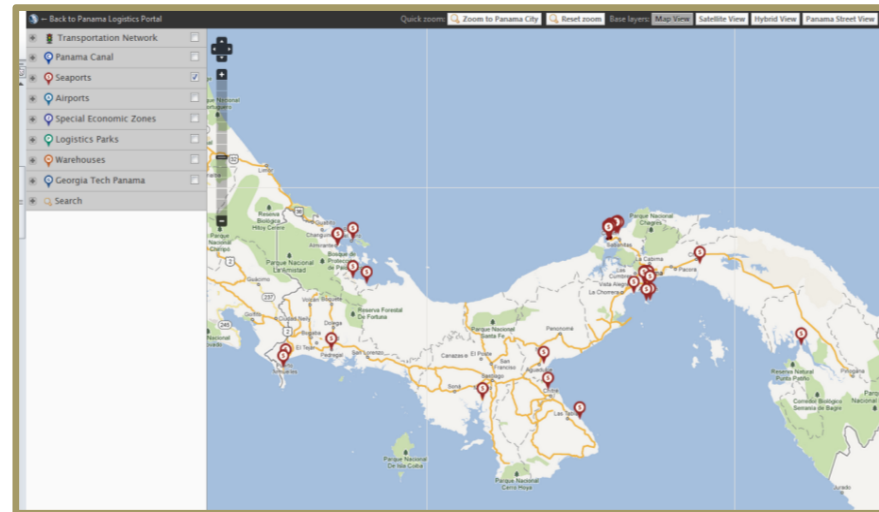
Create Data Repositories

Create Modeling Framework



Research Agenda

Create Models of
Panama's Logistics
Network



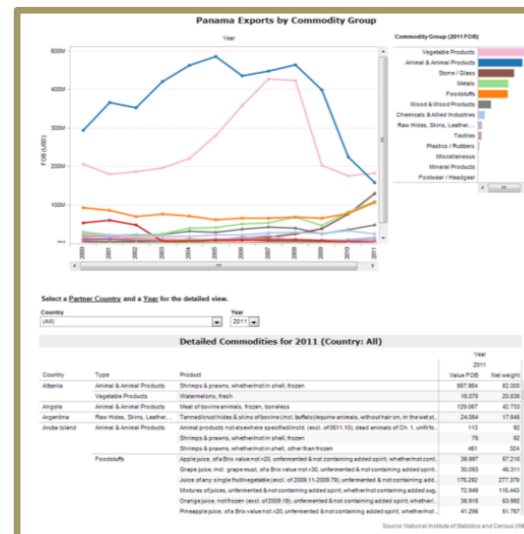
Develop tools for
Logistics Decision
Support



Research Agenda

Create Models of Panama's current and potential trade flows

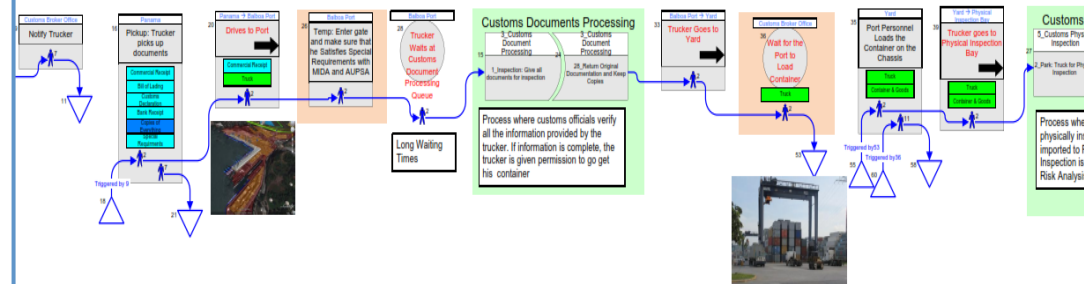
Develop Tools for Performing Trade Analytics



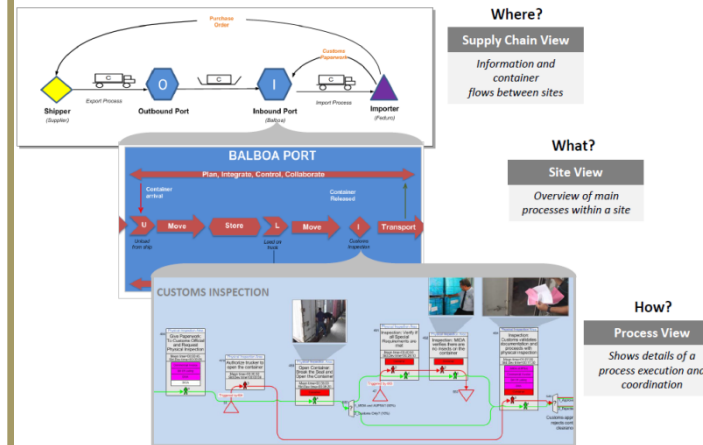
Research Agenda

Assess Trade
and Logistics
Processes

Balboa Case Study – Importing Containers – Macro Model

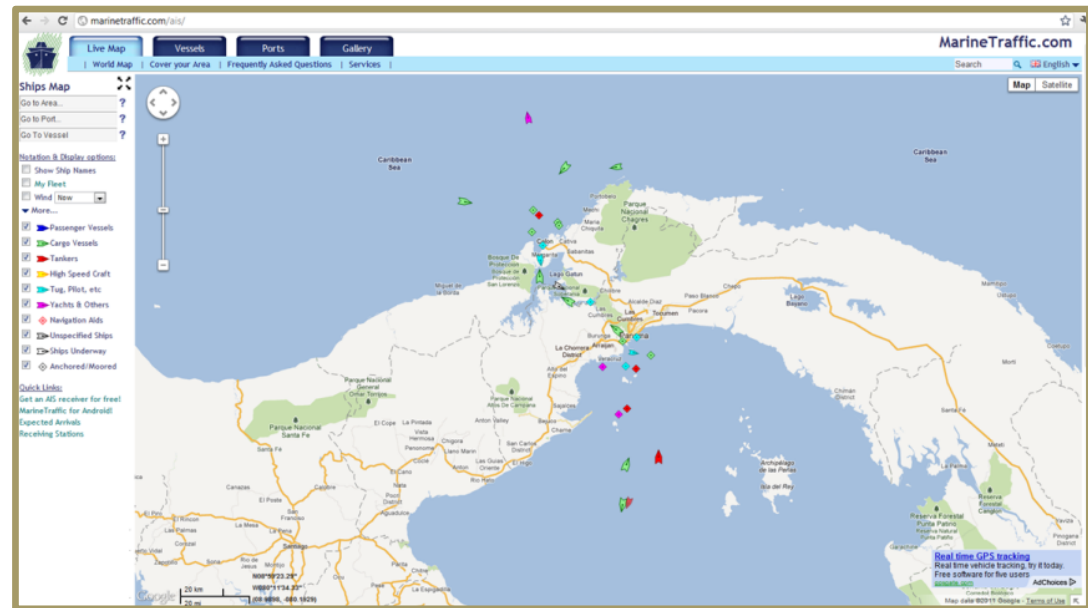


THREE LEVEL COMPOSITE MODELING



Research Agenda

Design Systems to
Measure Performance
and Provide Visibility



Panama Logistics Cabinet

- Ministry of Commerce & Industry
- Ministry of Presidency
- Ministry of Economy & Finance
- Ministry of Public Works
- Panama Canal Authority
- Maritime Authority
- Aviation Authority
- Customs
- Transit and Transportation Authority
- National Secretary of Science and Technology
- Metro Secretariat

Logistics Cabinet Activities

- To promote Panama as a Center of International Logistics Development of global significance and facilitate the expansion of Global Trade exploitation
- To capture information from the different entities, to identify strengths and possible weaknesses to overcome
- To establish a Master Plan and coordinate the implementation of a National Logistics Development Strategy.

Very busy people

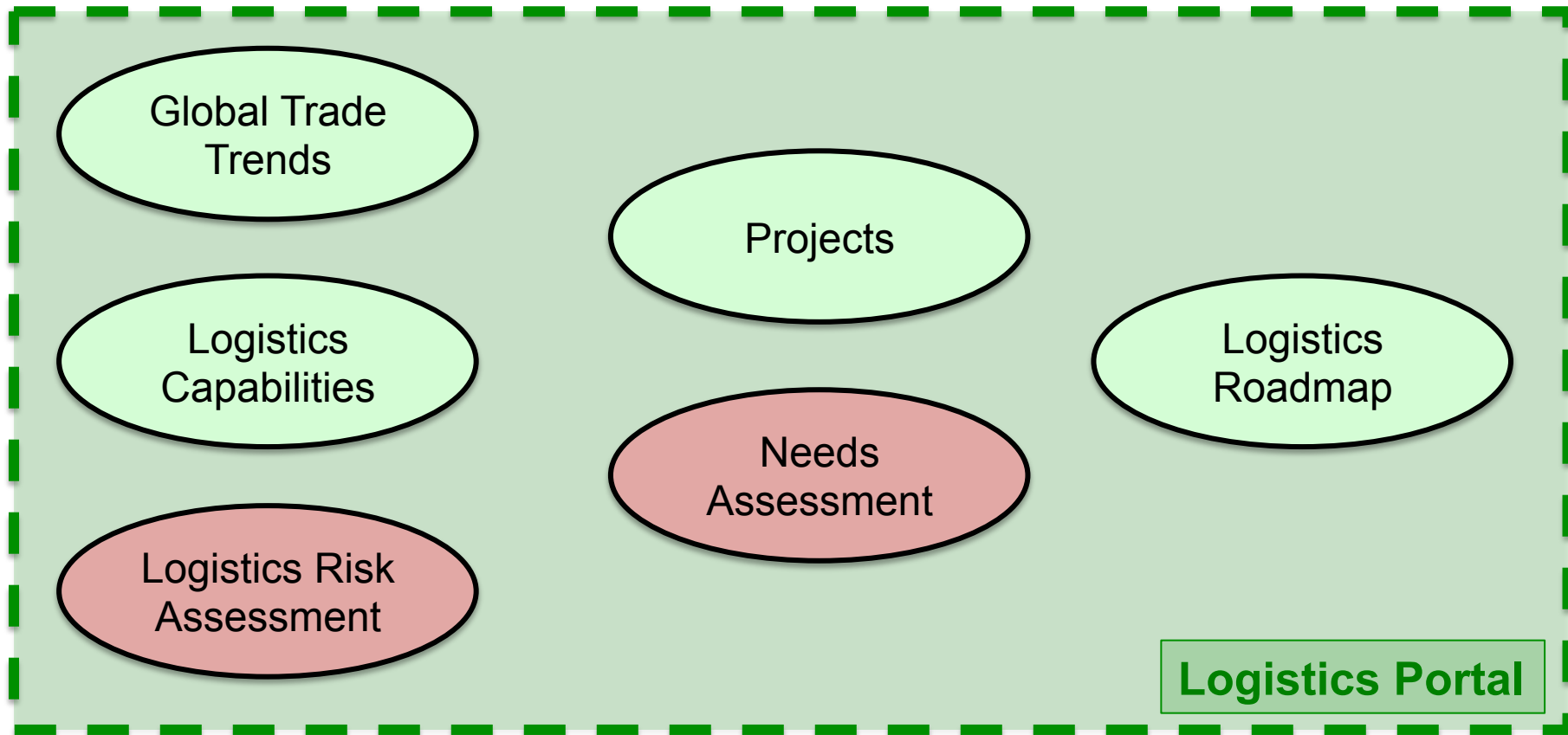
Different backgrounds and knowledge of logistics and trade

No dedicated analytical staff

Limited time for information gathering and analysis

Center Support of Cabinet Activities

<http://logistics.gatech.pa>



Limited resources so prioritization a necessity
Data repository is critical
Collaboration with stakeholders is essential

Logistics Risk Assessment

Example - Balboa flow disruption

- Presented to Cabinet as a major risk
- Role of the Center is to assess
 1. Develop a descriptive model of the disruption
 2. Identify what was impacted and how
 3. Provide quantitative and qualitative assessment of impact
 4. Identify proposed alternatives
 5. Provide quantitative and qualitative assessment of alternatives
 6. Present assessments to cabinet

